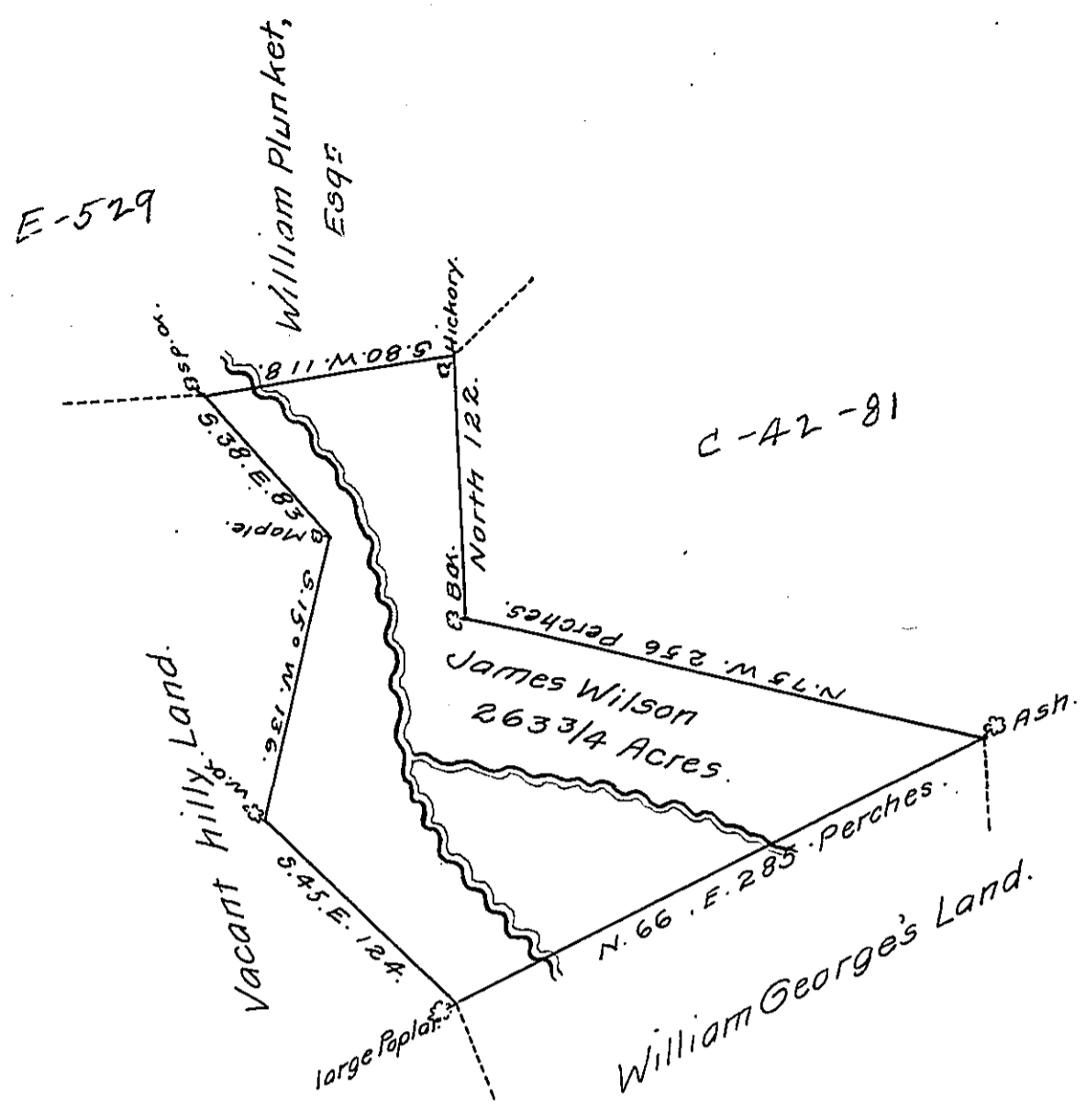


FORM No. 1.



A Draught of a Tract of Land called "Elk Meadow" situate on both branches of Clearfield Creek beginning about a quarter of a Mile above the forks of the said Creek & 60 Perches above the great Elk Lick about thirteen Miles below the Clearfields adjoining and above Land of William Plunket, Esqr and below Land of William George in the County of Bedford containing two hundred and sixty three acres and three quarters of an acre and the usual Allowance of Six & Cent for Roads &c. surveyed the 30th Day of October 1773, for James Wilson in pursuance of a warrant granted to him the 12th Day of May in the same year

To JOHN LUKENS, Esqr,
Surveyor General of
Pennsylvania &c.

By Thomas Smith, D.S.

IN TESTIMONY that the above is a copy of the original remaining on file in the Department of Internal Affairs of Pennsylvania, made conformably to an Act of Assembly approved the 16th day of February, 1833, I have hereunto set my Hand and caused the Seal of said Department to be affixed at Harrisburg, this twenty seventh day of January, 1911.

Henry Houck
Secretary of Internal Affairs.